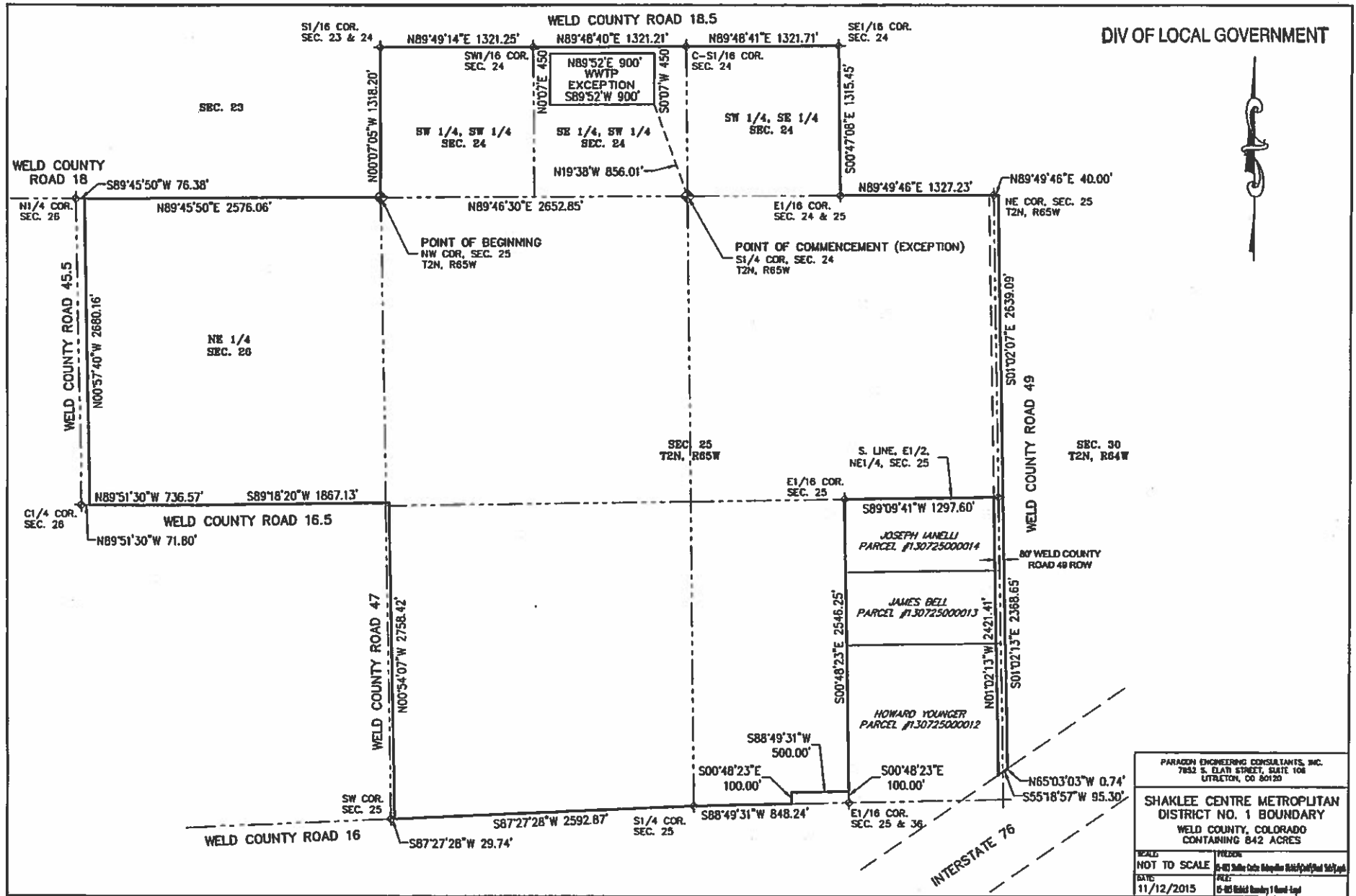


# RECEIVED

FEB 11 2016

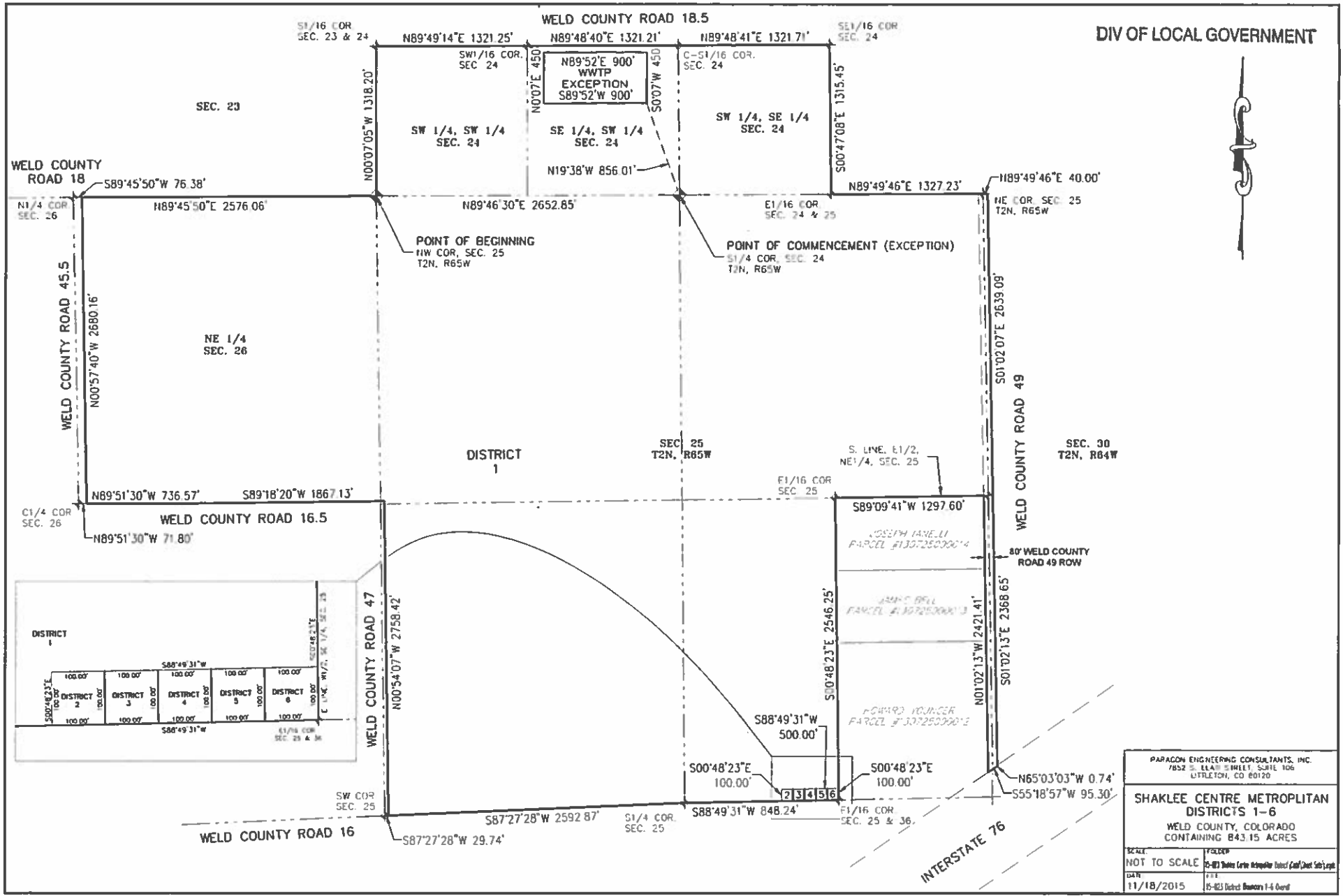
DIV OF LOCAL GOVERNMENT



PARADISE ENGINEERING CONSULTANTS, INC. 7832 S. ELATI STREET, SUITE 108 LITTLETON, CO 80120	
SHAKLEE CENTRE METROPOLITAN DISTRICT NO. 1 BOUNDARY WELD COUNTY, COLORADO CONTAINING 842 ACRES	
SCALE: NOT TO SCALE	FILED: 6-401 State Code Register 8842 (Final 10/14)
DATE: 11/12/2015	FILE: 6-401 State Code Register 1 (Final) 10/14

FEB 11 2016

DIV OF LOCAL GOVERNMENT



PARACON ENGINEERING CONSULTANTS, INC. 7852 S. ELMO STREET, SUITE 106 LITTLETON, CO 80120	
<b>SHAKLEE CENTRE METROPOLITAN DISTRICTS 1-6</b> WELD COUNTY, COLORADO CONTAINING 843.15 ACRES	
SCALE NOT TO SCALE	PROJECT 15-013 Shalee Centre Metropolitan District (Add/Amend Sub) Legal
DATE 11/18/2015	DRAWN BY 15-013 District Diagram 1-4 Coord